

会议与活动  
CONFERENCES & EVENTS

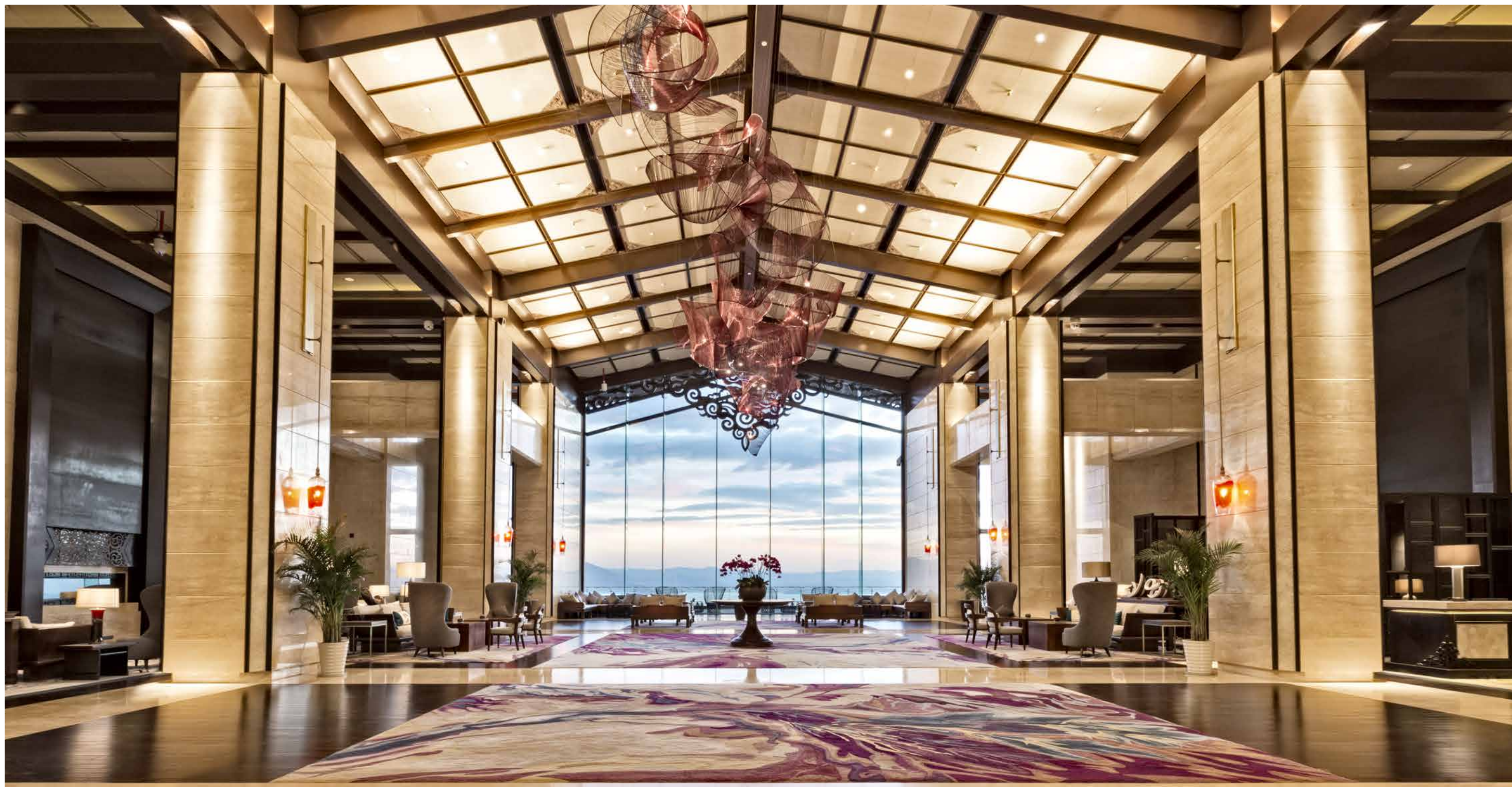


  
**Hilton**  
DALI RESORT & SPA  
大理实力希尔顿酒店

## 欢迎光临 大理实力希尔顿酒店

### 会议与活动的时尚之选

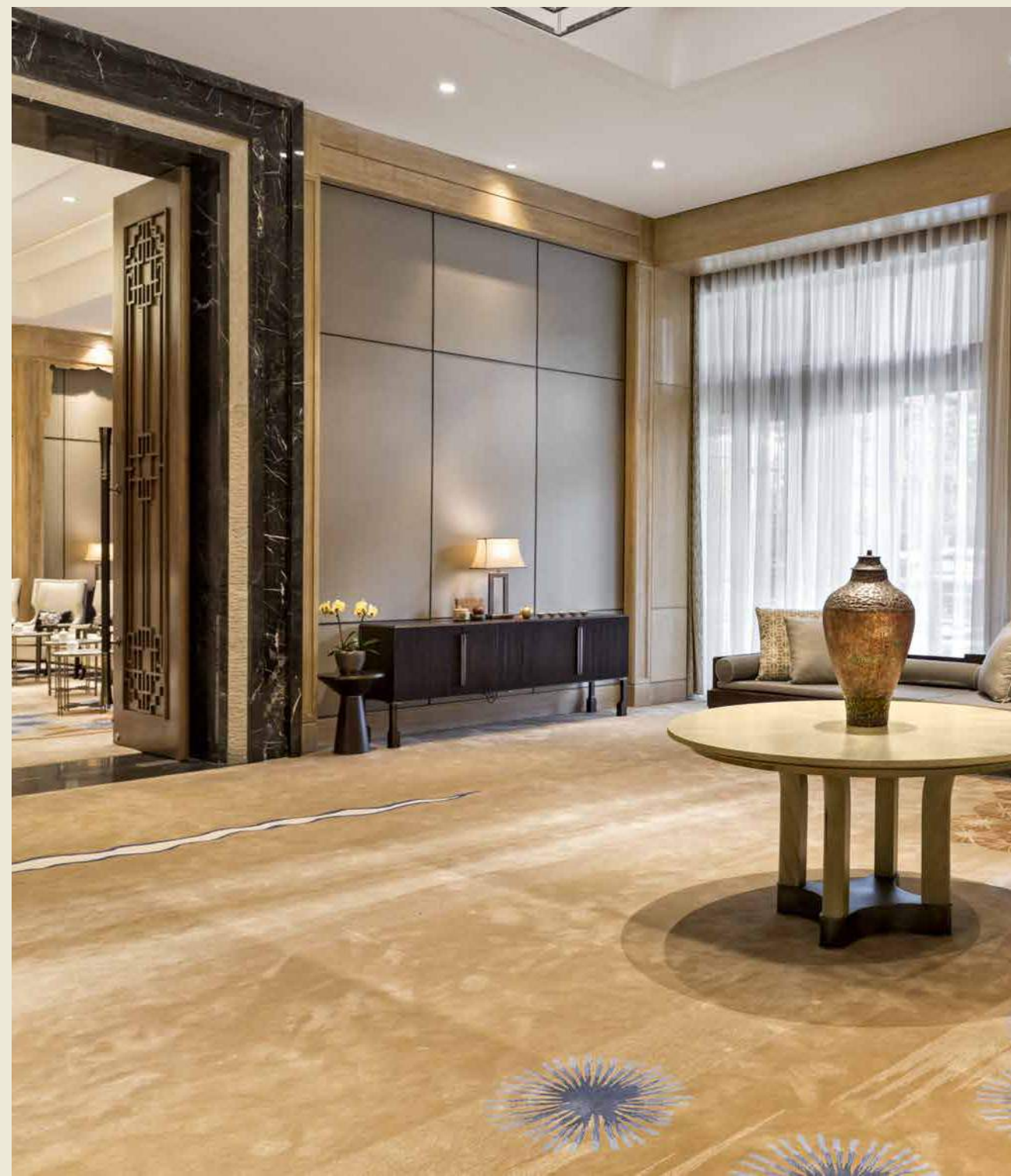
酒店拥有苍山宴会厅、洱海宴会厅和其他12个多功能厅，是举办盛大婚礼、产品发布会和各类正式会议的绝佳场所。所有场地皆配置高速有线及无线网络和最新影音设备，我们的专业团队将竭诚为您服务，满足您的一切需求。



## WELCOME TO HILTON DALI RESORT & SPA

### Meet in style

The hotel features Cangshan Ballroom, Erhai Ballroom and 12 multi-function meeting spaces of various sizes. With Wi-Fi and wired internet access, the latest audiovisual technology as well as dedicated service from our team members, you can be assured that all your needs will be met for a successful event.





## 酒店地理位置

大理实力希尔顿酒店地理位置优越，毗邻感通索道、苍山国家地质公园、张家花园、观音塘等著名旅游景点。

- 大理古城 4公里
- 下关 10公里
- 大理火车站 13公里
- 大理机场 24公里

## LOCATION

Guests will have the pleasure to explore the nearby beautiful landscaped attractions such as Gantong Ropeway, Cangshan National Geopark, The Zhang's Garden' and Guanyin Nunnery, and discover lots of recreational activities in and around the Hotel.

- Dali Old City 4 km
- Xiaguan 10 km
- Dali Train Station 13 km
- Dali Airport 24 km



## 快速一览

### 客房

- 客房总数: 375间
- 豪华大床房: 94间
- 豪华双床房: 63间
- 行政大床房: 61间
- 行政双床房: 13间
- 精选大床房: 64间
- 精选双床房: 51间
- 雅致套房: 8间
- 首选套房: 12间
- 豪华套房: 4间
- 臻选套房: 2间
- 无障碍客房: 3间

入住时间: 下午3时  
退房时间: 中午12时

### 餐饮

- 香 — 全日餐厅
- 御璽 — 中餐厅
- 揽月 — 意式餐厅
- 佳酿吧 — 酒吧
- 大堂吧 — 酒吧



### 会议

酒店拥有苍山宴会厅、洱海宴会厅和其他12个多功能厅，是举办盛大婚礼、产品发布会和各类正式会议的绝佳场所。所有场地皆配置高速有线及无线网络和最新影音设备，我们的专业团队将竭诚为您服务，满足您的一切需求。

#### 多功能场地:

- 苍山宴会厅 (1,100平方米)
- 洱海宴会厅 (300平方米)
- VIP外交会见室 (230平方米)
- 董事会议室 (75平方米)
- 10间大小不同会议室

#### 备用服务:

- 翻译服务
- 花艺布置
- 电话会议设备
- 带显示器的DVD
- 卡拉OK系统
- MD录音机



## AT A GLANCE

### GUEST ROOMS

- Total Number of Rooms: 375
- Deluxe King Rooms 94
- Deluxe Twin Rooms 63
- Executive King Rooms 61
- Executive Twin Rooms 13
- Premier King Rooms 64
- Premier Twin Rooms 51
- Junior Suites 8
- King Suites 12
- Deluxe Suites 4
- Premier Suites 2
- Accessible Rooms 3

Check-In: 3:00pm  
Check-Out: Noon

### EAT & DRINK

- Splces - All Day Dining
- Yuxi - Chinese Restaurant
- La Bella Luna - Italian Restaurant
- The Brew Bar

### MEETINGS & EVENTS

The hotel features Cangshan Ballroom, Erhai Ballroom and 12 multi-function meeting spaces of various sizes. With Wi-Fi and wired internet access, the latest audiovisual technology as well as dedicated service from our team members, you can be assured that all your needs will be met for a successful event.

#### Function space:

- Cangshan Ballroom (1,100m<sup>2</sup>)
- Erhai Ballroom (370m<sup>2</sup>)
- VIP Diplomat room (230m<sup>2</sup>)
- Boardroom (75m<sup>2</sup>)
- 10 meeting rooms

#### Supplementary services:

- Translation services
- Floral arrangements
- Teleconference facilities
- DVD monitor
- Karaoke system
- MD recorder



## 以下场地可应用于不同场合与活动规模

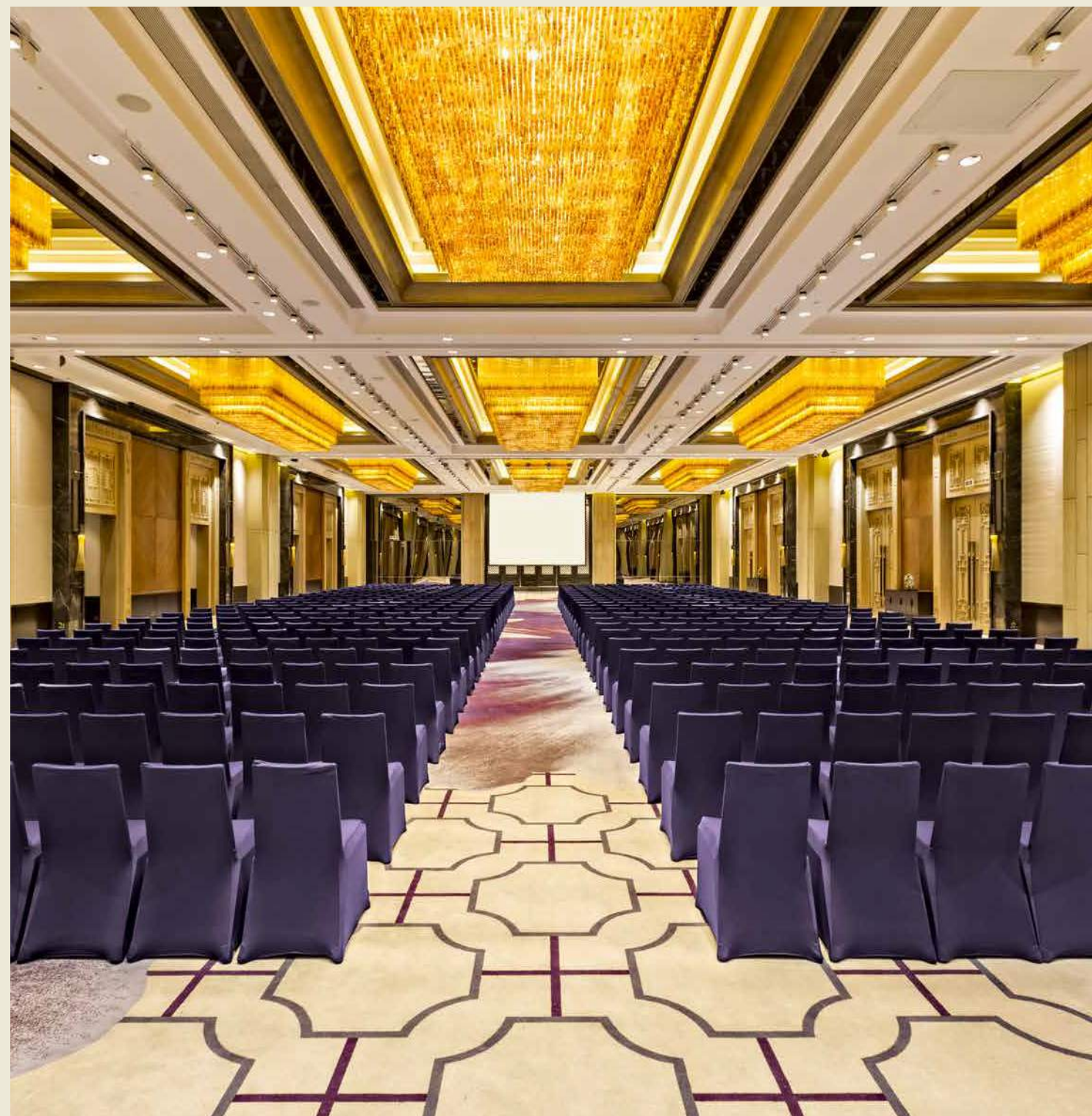
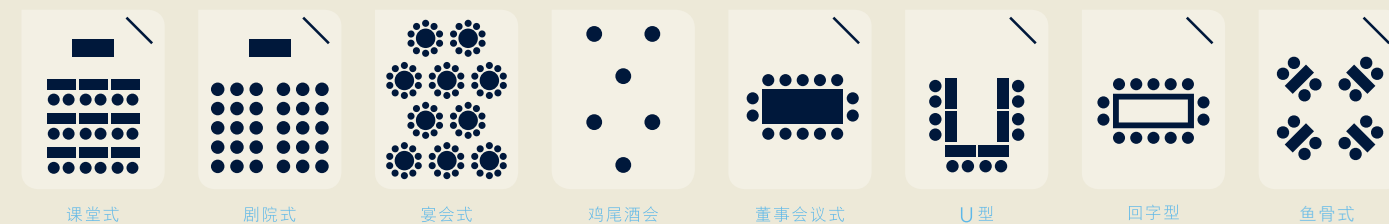
### 会议及宴会场形图

按照会议日程及规模, 您可选择适合您会议形式的场地, 并敬请及早预订。

### 人数容量与场地大小

	长度x宽度 (米)	面积(平方米)	层高(米)	课堂式	剧院式	宴会式	鸡尾酒会	董事会议式	U型	回字型	鱼骨式
苍山宴会厅	50x22	1100	7.2	480	780	520	700	220	—	—	420
苍山宴会厅A/B/C	16.5x22	365	7.2	180	240	150	200	90	—	—	72
苍山宴会厅A+B	33x22	730	7.2	300	480	300	400	180	—	—	240
苍山宴会厅B+C	33x22	730	7.2	300	480	300	400	180	—	—	240
苍山宴会厅前厅	51x6.9	350	7.2	—	—	140	—	—	—	—	—
洱海宴会厅	22.2x13.5	300	5.5	108	200	120	100	48	45	48	72
洱海宴会厅前厅	25x7.2	180	5.5	—	—	70	—	—	—	—	—
董事会议室	10.3x7.3	75	5.5	—	—	—	—	24	22	24	—
云弄厅	10.6x9.5	100	5.5	48	60	40	30	24	24	21	30
沧浪厅	10.3x7.3	75	5.5	24	40	24	20	21	18	18	20
五台厅	9.3x7.5	70	5.5	27	40	30	30	24	21	21	24

### 会议与活动场形图



## THE FOLLOWING VENUES ARE AVAILABLE TO SUIT VARIOUS AGENDAS AND GROUP SIZES

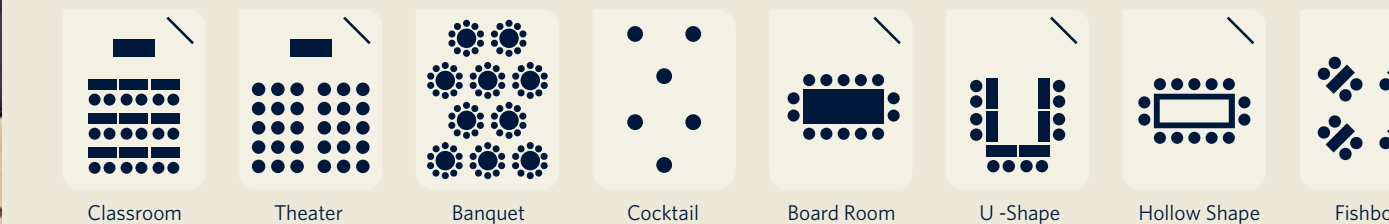
### Conference, event and meeting layouts

Complement your meeting by selecting just the right venue for your agenda and group size. Browse through our offerings, then contact us to reserve the room that best meets your needs.

### CAPACITIES & DIMENSIONS

	DIMENSIONS (L x W m)	AREA (m <sup>2</sup> )	CEILING HEIGHT (m)	CLASSROOM	THEATRE	BANQUET	COCKTAIL RECEPTION	CONFERENCE	U SHAPE	HOLLOW SQUARE	FISHBONE
Cangshan Ballroom	50x22	1100	7.2	480	780	520	700	220	—	—	420
Cangshan Ballroom A/B/C	16.5x22	365	7.2	180	240	150	200	90	—	—	72
Cangshan Ballroom A+B	33x22	730	7.2	300	480	300	400	180	—	—	240
Cangshan Ballroom B+C	33x22	730	7.2	300	480	300	400	180	—	—	240
Cangshan Ballroom Foyer	51x6.9	350	7.2	—	—	140	—	—	—	—	—
Erhai Ballroom	22.2x13.5	300	5.5	108	200	120	100	48	45	48	72
Erhai Ballroom Foyer	25x7.2	180	5.5	—	—	70	—	—	—	—	—
Boardroom	10.3x7.3	75	5.5	—	—	—	—	24	22	24	—
Yunnong	10.6x9.5	100	5.5	48	60	40	30	24	24	21	30
Canglang	10.3x7.3	75	5.5	24	40	24	20	21	18	18	20
Wutai	9.3x7.5	70	5.5	27	40	30	30	24	21	21	24

### EVENT & MEETING ROOM FLOOR PLANS



## 以下场地可应用于不同场合与活动规模

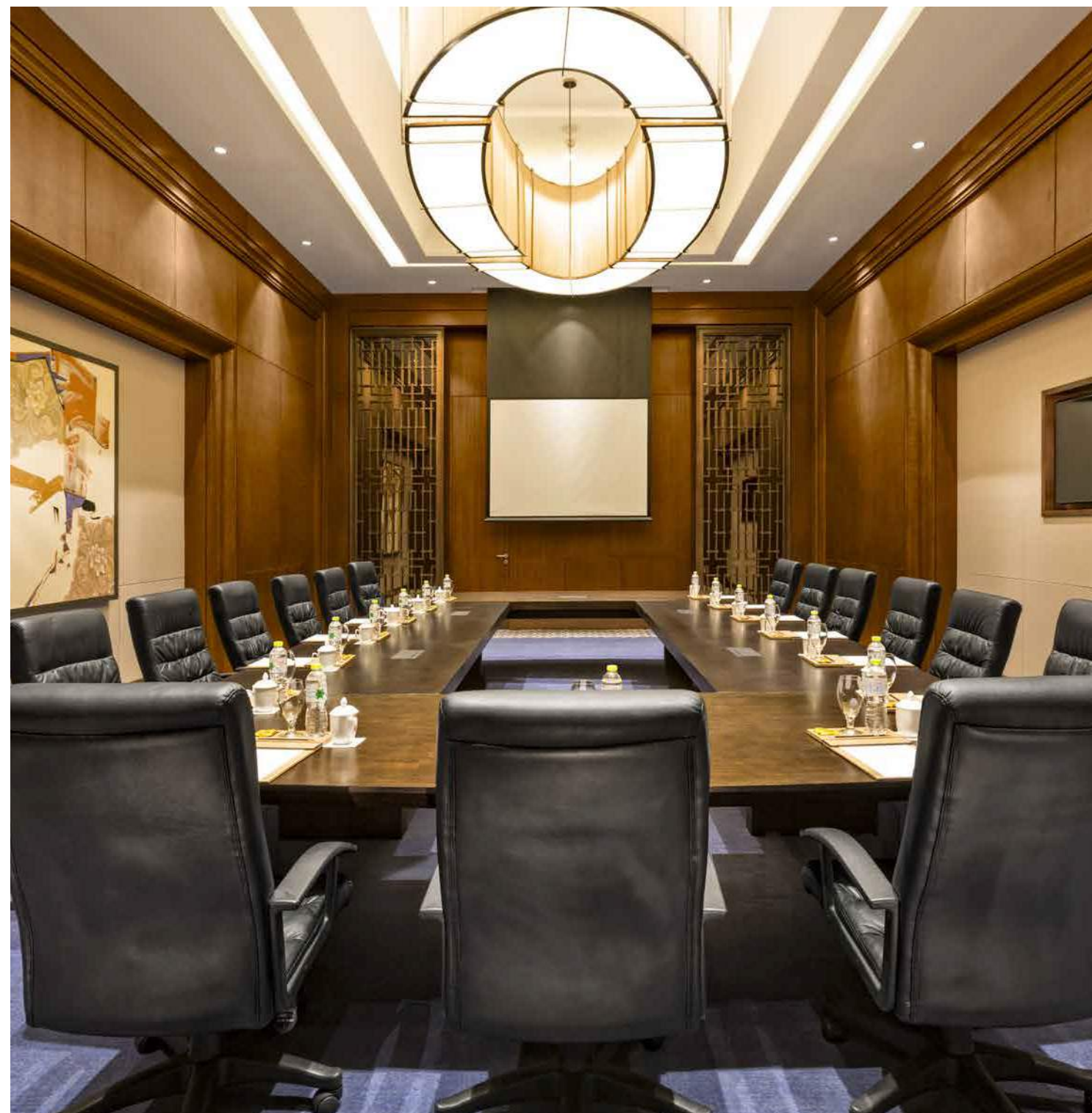
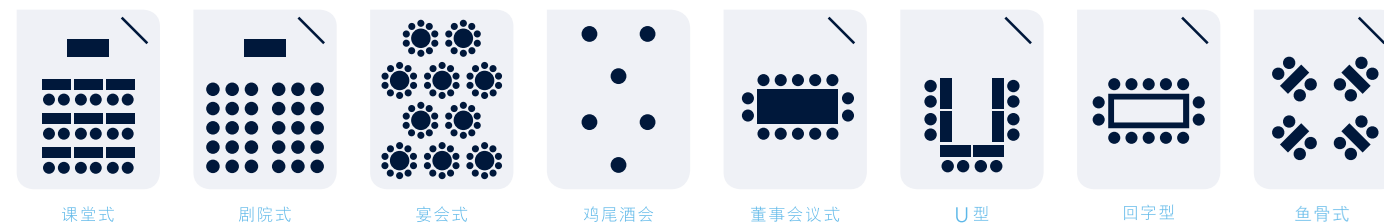
### 会议及宴会场形图

按照会议日程及规模, 您可选择适合您会议形式的场地, 并敬请及早预订。

### 人数容量与场地大小

	长度x宽度 (米)	面积(平方米)	层高(米)	课堂式	剧院式	宴会式	鸡尾酒会	董事会议式	U型	回字型	鱼骨式
白云厅	9x6.7	60	5.5	24	30	20	20	20	21	21	21
鹤云厅	11x10	110	5.5	48	60	40	30	24	21	24	30
三阳厅	8.6x7	60	5.5	24	32	20	15	18	18	21	20
应乐厅	8x7.5	60	5.5	24	32	30	15	12	18	21	20
龙泉厅	10.6x7.5	80	5.5	24	30	15	15	24	21	24	24
玉局厅	10x8	80	5.5	36	50	30	20	24	21	24	24
中和贵宾厅	—	210	5.5	—	—	—	—	—	—	—	—
圣应厅	10.8x6.5	70	5.5	24	36	20	20	24	21	31	18

### 会议与活动场形图



## THE FOLLOWING VENUES ARE AVAILABLE TO SUIT VARIOUS AGENDAS AND GROUP SIZES

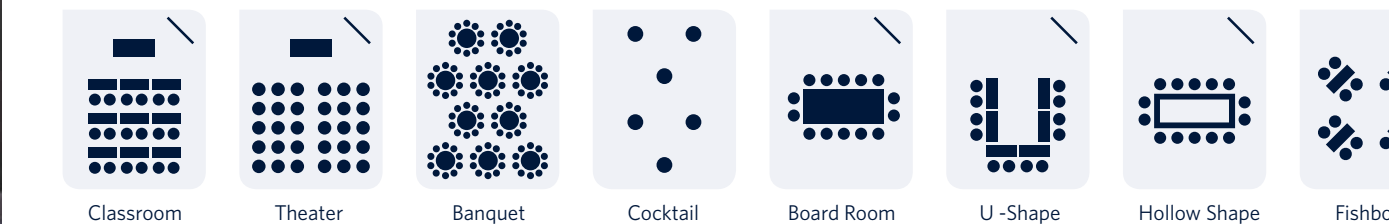
### Conference, event and meeting layouts

Complement your meeting by selecting just the right venue for your agenda and group size. Browse through our offerings, then contact us to reserve the room that best meets your needs.

### CAPACITIES & DIMENSIONS

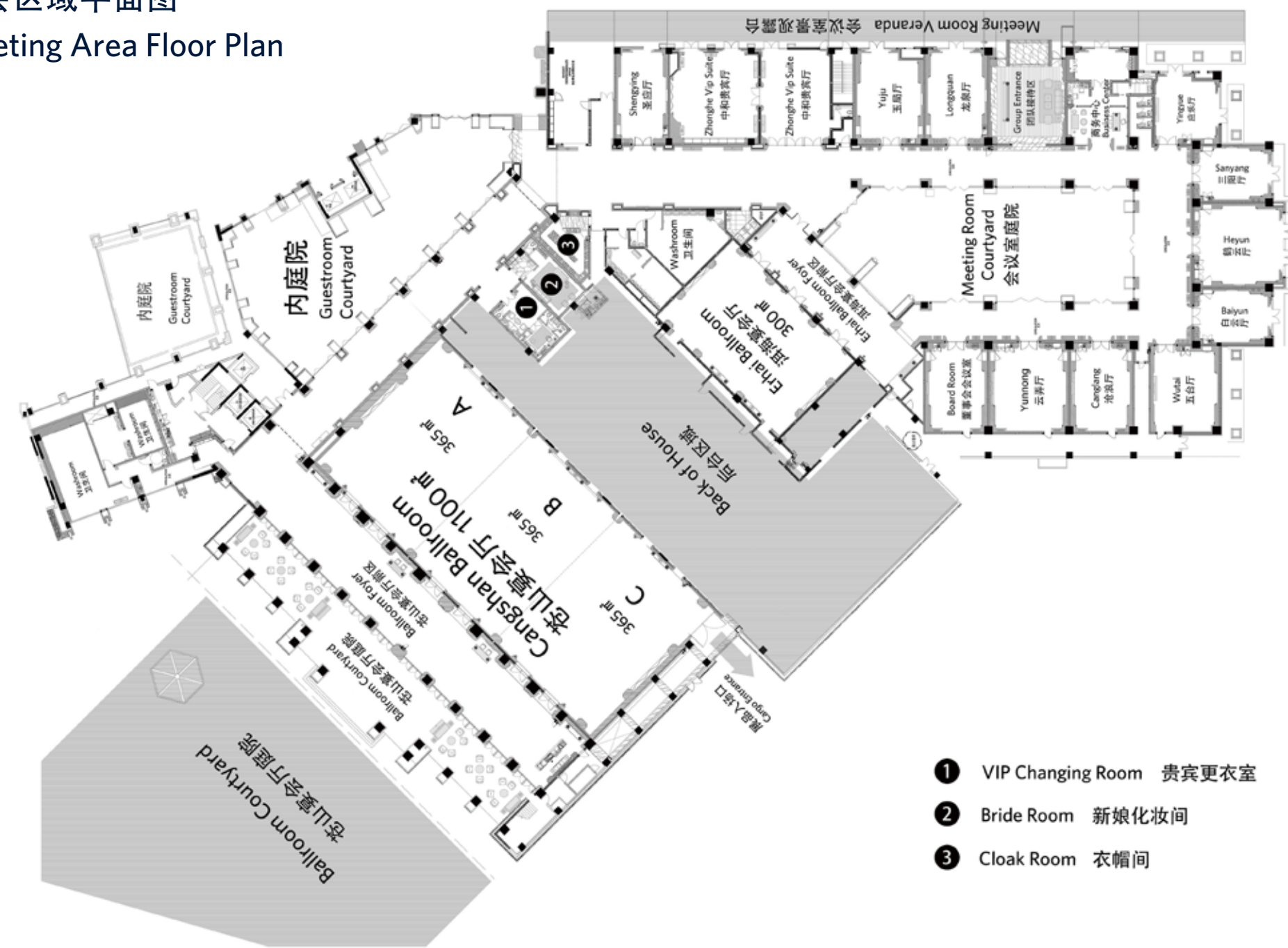
	DIMENSIONS (L x W m)	AREA (m <sup>2</sup> )	CEILING HEIGHT (m)	CLASSROOM	THEATRE	BANQUET	COCKTAIL RECEPTION	CONFERENCE	U SHAPE	HOLLOW SQUARE	FISHBONE
Baiyun	9x6.7	60	5.5	24	30	20	20	20	21	21	21
Heyun	11x10	110	5.5	48	60	40	30	24	21	24	30
Sanyang	8.6x7	60	5.5	24	32	20	15	18	18	21	20
Yingyue	8x7.5	60	5.5	24	32	30	15	12	18	21	20
Longquan	10.6x7.5	80	5.5	24	30	15	15	24	21	24	24
Yuju	10x8	80	5.5	36	50	30	20	24	21	24	24
Zhonghe VIP suite	—	210	5.5	—	—	—	—	—	—	—	—
Shengying	10.8x6.5	70	5.5	24	36	20	20	24	21	31	18

### EVENT & MEETING ROOM FLOOR PLANS





宴会区域平面图  
Meeting Area Floor Plan







[hilton.com.cn/dali](http://hilton.com.cn/dali)  
[daliresortandspa.hilton.com](http://daliresortandspa.hilton.com)

大理实力希尔顿酒店  
HILTON DALI RESORT & SPA

中国云南省大理市七里桥感通路以南 | 邮编 671000  
Qili Bridge | South of Gantong Road | Dali City | Yunnan Province | P.R. China 671000  
电话 T:+86 872 668 8888 | 传真 F:+86 872 268 6666 | 电邮 E: [dlugt\\_hotel@hilton.com](mailto:dlugt_hotel@hilton.com)